



QUAD HD MINI-DOME CAMERA

Ariel™ Quad HD Mini-Dome

The Ariel™ Quad HD Dome is ready for diverse motion and lighting conditions found in critical infrastructure and commercial locations. The camera includes Shutter Wide Dynamic Range, IR Illumination and H.264/H.265 compression. The Ariel Quad HD Dome reduces the total cost of ownership through network and storage savings. When controlled using FLIR's United VMS, the camera also utilizes unique adaptive streaming technology, enhancing the overall viewing experience.

[www.flir.com /security](http://www.flir.com/security)



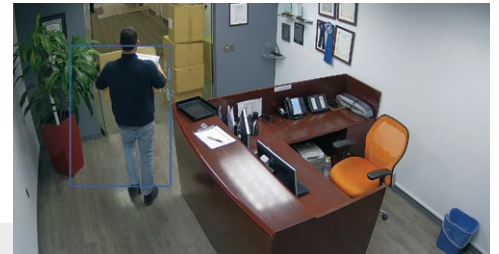
LATEST SENSOR TECHNOLOGY

Features include Quad HD resolution, Shutter Wide Dynamic Range, and H.264/H.265 compression.



TRUE DAY/NIGHT COVERAGE

Camera sensitivity equals 0.07 Lux (color), 0.01 Lux (BW), and 0 Lux with IR illumination.



BUILT-IN ANALYTICS

The camera offers tamper detection, and multi-zone video motion detection.

SPECIFICATIONS

Camera

Image Sensor	1/2.9" BSI CMOS
Sensor Resolution	2560 x 1440
Scanning Mode	Progressive
Sensitivity	0.07 (color)/0.01 (BW), 0 Lux with IR illuminator ON, measured at 30 IRE
Lens Type	CM-3304-11-I: Varifocal 2.8-8.5mm, 36°-103° HFOV, F1.2, D/N, motorized auto-focus / auto-iris, P-Iris lens CM-3304-21-I: Varifocal 9-22mm, 15°-34° HFOV, F1.5, D/N, motorized auto-focus / auto-iris, P-Iris lens
Automatic Electronic Shutter (AES)	1/1.75 to 1/10,000 (auto)
Digital Slow Shutter (DSS)	1/7.5(6.25)~1/60(50) NTSC(PAL)
White Balance	Auto / ATW / Manual / One Push
Automatic Gain Control (AGC)	Auto
Back Light Compensation	On / Off
Shutter WDR	On / Off
Noise Reduction	3D
Tamper Detection	Yes
Privacy Zones	Yes
Video Motion Detection	Yes
General Purpose Video Analytics*	Border Line, Counting, Area Protection, Loitering, Object Dropped, Object Removed
Day / Night Mode	Yes
Mechanical IR Cut Filter	Yes
Signal to Noise Ratio (SNR)	More than 50dB when AGC off
Video	
Compression	H.265 main profile, H.264 main profile/high profile, Motion JPEG
Maximum Performance	H.264/H.265 30/25 FPS @ 1440P or H.264/H.265 15/12 FPS @ 1440P + 1080P + D1 (NTSC/PAL)
Resolution Range	Scalable from D1 to Quad HD 2560 x 1440
Bandwidth	Configurable between 64Kbps and 20Mbps
Rate Control	CBR, CVBR, MJPEG
SD Card Recording ¹	microSDXC up to 128GB (Class 10)
IR Illuminator	
Distance	Up to 30m (98 ft.)
Angle of Illumination	Full 60°
LED Type	High efficiency SMD
Peak Emission Wavelength (nm)	850

Network

Network Protocols	TCP, UDP, ICMP, HTTP, HTTPS, FTP, DHCP, DNS, DDNS, RTP, RTSP, RTCP, PPPoE, NTP, UPnP, SMTP, SNMP, IGMP, 802.1X, QoS, IPv4, IPv6, SSL, LDAP
Ethernet	10/100, IEEE 802.3, auto sensing 1 x RJ45
Remote Configuration	Via web browser or supported video management software
Firmware Upgrade	Flash memory for upgrade of camera firmware over the network
Supported Web Browser	Internet Explorer 10+, Firefox 50+, Chrome 55+
Security	User account with password protection and IP filter

Audio Connection

Bi-Directional Audio	1 Audio Line Input, G.711 a/μ-law, AAC support + 1 Audio Line Output
----------------------	---

Alarm

Input	1 dry alarm contact
Output	1 Relay Contact

Physical

Enclosure	Indoor/Outdoor: IK10 rated vandal IP67
Dimensions	138 x 104 mm (5.43 x 4.09 in.)
Unit Weight	0.82kg (1.8 lbs.)

Mechanical

Bubble F-Stop	F0.0 - clear
Pan / Tilt	360° / ±80°

Electrical

Input Voltage	802.3af PoE
Power Consumption	8W / 12W with heater and IR
Power Connector	PoE / RJ45

Environmental

Operating Temperature	-40°C to 50°C (-40°F to 122°F)
Storage Temperature	-40°C to 60°C (-40°F to 140°F)
Humidity	90% (non-condensing)

Warranty & Regulatory

Warranty	According to FLIR RMA Policy and Process Notice document
USA	UL, FCC Part 15 (subpart B, class A)
International	CE marked, EN61000-6-3 & EN50130-4, RoHS, RCM
MTBF (hrs)	383,688

* Requires license activation: part number TBD. Single active rule at any time. Requires license purchased separately.
¹ Excluding countries where disallowed.

Camera Ordering Information

Type	Series	Camera Resolution	Lens Options	Environmental	IR Illuminator
CM	XX	XX	X	X	I
Mini-dome Camera	33 = Ariel Gen III	04 = Quad HD 2688 x 1520	1 = 2.8-8.5mm 2 = 9-22mm	1 = IP67 Vandal with Heater	1 = 60° Illuminator

Mounting Options

CM-CAPX-31	Pendant Cap for CM-31xx Series and CM-33xx Series
CX-ARMX-G3	Wall mount bracket 1.5" NPT (m) threaded
CM-4S-31	4S Mounting Adapter for CM-31xx and CM-33 Series
CM-BKBX-31	Back Box for CM-31xx and CM-33xx Series
CX-ELBX-G3	Wall mount bracket 1.5" NPT (m) threaded with IP68 electrical box enclosure
CX-GSNK-G3	Goose-neck mount 1.5" NPT (m) threaded with IP68 electrical box enclosure
CX-CRNR-G3	90° Exterior Angle corner adapter for Cx-xxxx-G3 mounts
CM-RCSD-G2	Recessed Kit for CM-31xx, CM-33xx, and CM-62XX Series Mini-dome Cameras
CX-POLE-G3	Pole Adapter for Cx-xxxx-G3 mounts including 2.5" - 8.5" straps

Specifications are subject to change without notice. For the most up-to-date specs, go to www.flir.com



CORPORATE HEADQUARTERS

27700 SW Parkway Ave.
Wilsonville, OR 97070
PH: +1 877.773.3547

FLIR SECURITY SYSTEMS, INC.

65 Challenger Rd, Suite 201
Ridgefield Park, NJ 07660
PH: +1 201.368.9700

FLIR UK

7 Lancaster Court
High Wycombe, HP 123td
PH + 44 (0) 1494.430248
F + 44 (0) 1494.446928

FLIR MEXICO

Felipe Villanueva 10
Guadalupe Inn,
Alvaro Obregon, 01020
PH: +52 55.55805618
Email: info.cala@flir.com

www.flir.com
NASDAQ: FLIR

Equipment described herein is subject to US export regulations and may require a license prior to export. Diversion contrary to US law is prohibited. Imagery for illustration purposes only. Specifications are subject to change without notice. ©2019 FLIR Systems, Inc. All rights reserved. Rev. 05/20/19

19-0582-SEC-ENT Ariel CM-3304 Datasheet



The World's Sixth Sense®